

LoDo Industrial Suite For Lease

APEX
Commercial



2110 Market St • Denver, CO 80205

Suite Available: Full Basement

- 5,969 RSF of Industrial / Creative Space
- 9' Drive in door with concrete access ramp
- Includes 1 indoor garage parking space
- 9' Ceiling Height
- C-MX-8 & UO-2 Denver Zoning

Lease Rate Negotiable (MG)
Tenant pays Utilities, Trash, Etc

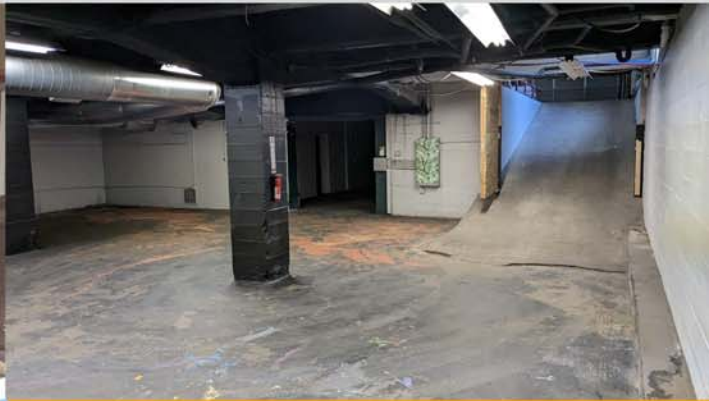
For more information, please call or email:
Jeremiah Maupin - 303-819-9135
jeremiah@apexreco.com

Apex Real Estate Advisors

9250 E Costilla Ave Suite 110 • Greenwood Village, CO 80112 • Office: 720.440.2156 • Email: info@apexreco.com

No warranty or representation is made as to the accuracy of the foregoing information.

LoDo Industrial Suite For Lease



Here's your chance to lease one of the most unique spaces in the heart of downtown Denver. This LoDo location is steps from Coors Field, new apartment communities, and world-class dining. Adjacent to ample day-parking and a private alley drive in door access with an included garage parking space make this as convenient as it gets. A potential signage opportunity exists on the upper right corner of the building's mural for whoever leases this great space.



Apex Real Estate Advisors

9250 E Costilla Ave Suite 110 • Greenwood Village, CO 80112 • Office: 720.440.2156 • Email: info@apexreco.com

For more information, please call or email:
Jeremiah Maupin - 303-819-9135
jeremiah@apexreco.com

No warranty or representation is made as to the accuracy of the foregoing information.